

SECOND FLOOR PLAN SCALE: 1/4" = 1'-0"

WALL LEGEND

- ① ——— EXTERIOR WALL.
- ② [hatched] EXTERIOR STUD PARTITION.
- ③ ——— INTERIOR STUD PARTITION.
- ④ [dashed] 1-HR INTERIOR FIRE RATED PARTITION

LEGEND

- (X) WALL TYPES. REFER TO PARTITION SCHEDULE ON SHEET A002 FOR MORE INFORMATION.
- [X] DOOR CALLOUT, REFER TO SCHEDULE SHEET A003.
- ◇ WINDOW ELEVATION SYMBOL AND NUMBER REFER TO SHEET A003.
- * DENOTES PANIC HARDWARE.
- [E] DENOTES FIRE EXTINGUISHER CABINET.

GENERAL NOTES

1. SEE DRAWING SHEET A700 FOR KITCHEN AND BATHROOM CABINET ELEVATIONS.
- THIS PROJECT IS TYPE V-B ONE-HOUR FIRE-RESISTIVE CONSTRUCTION AND SHALL COMPLY WITH CBC CHAPTER 7. PENETRATIONS THROUGH FIRE WALLS, FLOOR AND CEILING SYSTEMS SHALL BE IN ACCORDANCE WITH CBC SECTION 712.2.
1. SLEEVES SHALL BE SECURELY FASTENED TO THE ASSEMBLY PENETRATED AND THE SPACE BETWEEN THE ITEM CONTAINED IN THE SLEEVE AND THE SLEEVE SHALL BE PROTECTED. INSULATION AND COVERINGS ON OR IN THE PENETRATING ITEMS SHALL NOT PENETRATE THE ASSEMBLY UNLESS THE SPECIFIC MATERIAL USED HAS BEEN TESTED AS PART OF THE ASSEMBLY. CBC 712.2
2. UNLESS PENETRATING ITEMS ARE STEEL, FERROUS, OR COPPER PIPES, TUBES OR CONDUIT WHERE THE ANNULAR SPACE IS PROTECTED WITH AN APPROVED MATERIAL. PENETRATIONS SHALL COMPLY AS FOLLOWS:
 - a) FIRE-RESISTANT RATED ASSEMBLIES: PENETRATIONS SHALL BE INSTALLED AS TESTED IN AN APPROVED FIRE-RESISTANCE-RATED ASSEMBLY.
 - b) FIRESTOPPING SYSTEM: THROUGH PENETRATIONS SHALL BE PROTECTED BY AN APPROVED FIRESTOPPING SYSTEM INSTALLED AS TESTED IN ACCORDANCE WITH ASTM E814 OR UL1479, WITH A MINIMUM POSITIVE PRESSURE DIFFERENTIAL OF 0.01" OF WATER AND SHALL HAVE AN F RATING OF NOT LESS THAN THE REQUIRED FIRE-RESISTIVE RATING OF THE WALL PENETRATED.
 - c) MEMBRANE PENETRATIONS OF WALLS SHALL BE ALLOWED FOR STEEL ELECTRICAL BOXES THAT DO NOT EXCEED 16 SQUARE INCHES IN AREA AND THE TOTAL AGGREGATE AREA OF THE OPENINGS DOES NOT EXCEED 100 SQ. IN. IN ANY 100 SQ. FT. AREA. THE ANNULAR SPACE BETWEEN THE WALL MEMBRANE AND THE BOX SHALL NOT EXCEED 1/8". SUCH BOXES ON OPPOSITE SIDES OF THE WALL SHALL BE SEPARATED BY: 1) 24" HORIZONTAL DISTANCE, OR 2) SOLID FIREBLOCKING, OR 3) BY PROTECTING BOXES WITH LISTED PUTTY PADS, OR 4) A HORIZONTAL DISTANCE OF NOT LESS THAN THE DEPTH OF THE WALL CAVITY WHERE THE WALL CAVITY IS FILLED WITH CELLULOSE LOOSE-FILL, ROCKWOOL, OR SLAG MINERAL WOOL INSULATION.
 - d) MEMBRANE PENETRATIONS SHALL BE ALLOWED FOR THE ANNULAR SPACE CREATED BY THE PENETRATION OF A FIRE SPRINKLER, PROVIDED IT IS COVERED BY A METAL ESCUTCHEON PLATE.
 - e) PENETRATIONS BY AIR DUCTS THAT ARE NOT PROTECTED WITH DAMPERS SHALL COMPLY WITH #1 ABOVE.
 - f) NONCOMBUSTIBLE PENETRATING ITEMS SHALL NOT CONNECT TO COMBUSTIBLE ITEMS BEYOND THE POINT OF FIRESTOPPING.
 - g) HORIZONTAL ASSEMBLIES (CBC 712.4): UNLESS PENETRATING ITEMS ARE STEEL, FERROUS, OR COPPER PIPES, TUBES OR CONDUIT WHERE THE ANNULAR SPACE IS PROTECTED WITH AN APPROVED MATERIAL. PENETRATIONS LESS THAN 6" DIAMETER AND A TOTAL AGGREGATE AREA OF 144 SQ. IN. IN AND 100 SQ. FT. (OR LISTED ELECTRICAL BOXES) SHALL COMPLY WITH #2 ABOVE.
- JOINTS THROUGH FIRE WALLS AND CEILING SYSTEMS SHALL BE FIRE-TAPED AND ALL JOINTS IN ACCORDANCE WITH CBC SECTION 713. EXPOSED STRUCTURAL MEMBERS OF WOOD (LESS THAN 6X MEMBERS) OR STEEL SHALL BE FIRE PROTECTED WITH A LAYER OF 5/8" TYPE X GYPSUM BOARD IN ACCORDANCE WITH CBC SECTION 714.

rengel+co.
architects

3940 Broad Street #363
San Luis Obispo, California 93401
O+ 805.541.7115
F+ 805.541.7116
www.rengelarch.com

History record:

Date	Description

Revisions:

No.	Date	Description

Project name:
BROAD STREET VILLAGE BUILDING C
2238 BROAD STREET
SAN LUIS OBISPO, CA

PROGRESS SET
07.01.14

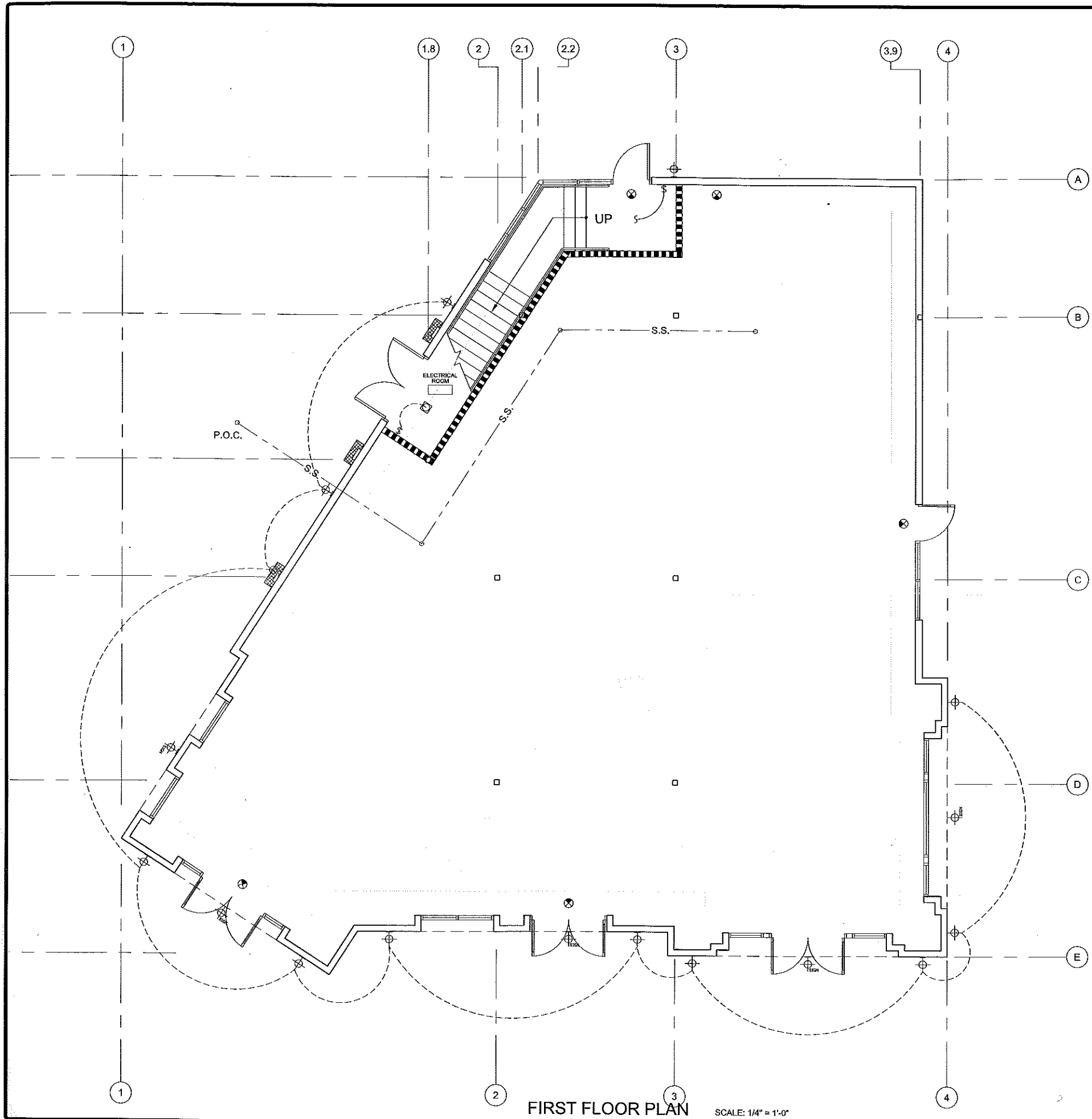
Stamp:

Sheet title:
SECOND FLOOR PLAN

Copyright 2013. All rights reserved. No part of this work product shall be reproduced in any form or by any means-graphic, electronic or mechanical, including photocopying, without permission in writing from RENGEL+CO.

Date: 06.19.14
Drawn by: R.C.A.
Project #: 201419
File name: H:\Projects\Broad Street Village\CD's
Sheet:

A201



FIRST FLOOR PLAN SCALE: 1/4" = 1'-0"

WALL LEGEND

- ① EXTERIOR WALL.
- ② EXTERIOR STUD PARTITION.
- ③ INTERIOR PARTITION.
- ④ 1-HR INTERIOR FIRE RATED PARTITION

LEGEND

- UNDER CABINET FLUORESCENT LIGHT FIXTURE
- ☐ RECESSED CAN LIGHT FIXTURE
- ☐ RECESSED CAN LIGHT FIXTURE, SPOT
- ☐ WALL MOUNTED LIGHT FIXTURE
- ☐ WALL MOUNTED SIGN OUTLET
- ☐ CEILING MOUNTED PENDANT FIXTURE
- ☐ CEILING MOUNTED EXHAUST FAN w/LIGHT FIXTURE
- ☐ CEILING MOUNTED FAN w/ LIGHT FIXTURE PROVIDE SEPARATE SWITCH FOR FAN & LIGHT
- ☐ (E) WALL MOUNTED DOWN CAST LIGHT SET ON AUTOMATIC TIMER & MOTION DETECTOR
- ☐ PHONE/DATA JACK
- ☐ 115 V DUPLEX RECEPTACLE @ +18" A.F.F. U.O.N.
- ☐ 115 V GFCI DUPLEX RECEPTACLE
- ☐ DUPLEX, SWITCH ONE OUTLET
- ☐ 115 V GFCI DUPLEX RECEPTACLE, WATER PROOF
- ☐ COMBO DUPLEX WITH USB PORT
- ☐ QUADPLEX
- ☐ 4-WAY SWITCH
- ☐ 3-WAY SWITCH
- ☐ SINGLE POLE SWITCH
- ☐ SWITCH w/ DIMMER CONTROL
- ☐ GAS STUB (SIZE AS REQ'D.)
- ☐ HOSE BIB
- ☐ SMOKE DETECTOR
- ☐ CATV
- ☐ NEW EDGE-LIT "EXIT" SIGN W/ 90 MIN. MINIMUM BATTERY BACK UP. "ISOLITE" "ELITE" SERIES EDGE-LIT. REFER TO ELECTRICAL DRAWINGS FOR SPECIFIED TYPE. THE DARKENED AREA INDICATES THE VIEW SIDE.

KEYNOTES

1. 200 AMP ELECTRIC METER WITH #4 UFER GROUND.
2. GFCI OUTLETS ON ALL ABOVE COUNTER OUTLETS IN KITCHEN MOUNTED AT +44" ABOVE FINISH FLOOR (TYP). OUTLETS SHALL BE LOCATED NO FARTHER THAN 24" AWAY FROM ANY POINT ALONG COUNTER AND ALL AREAS WIDER THAN 12" ON ANY PENINSULA/EATING BAR OUTLETS SHALL BE LOCATED AT +27" ABOVE FINISH FLOOR AND SHALL BE LOCATED NO FARTHER THAN 24" AWAY FROM ANY POINT ALONG PENINSULA/EATING BAR. AT EATING BAR FACING KITCHEN, SET GFCI OUTLET AT +39" ABOVE FINISH FLOOR TO CLEAR COUNTER AND TURN OUTLET SIDEWAYS (TYP).
3. WATER PROOF GFCI OUTLETS AT 18" ABOVE FINISH FLOOR (TYP).
4. PROVIDE GAS, 220V OUTLET, AND 110V OUTLET TO STOVE COOKTOP, AND/OR OVENS (TYP). ALSO PROVIDE ELECTRICAL FOR EXHAUST HOOD ABOVE COOKTOP (TYP).
5. SMOKE DETECTORS HARDWIRED AND INTERCONNECTED TO ONE ANOTHER. PROVIDE BATTERY BACKUP TO ALL SMOKE DETECTOR UNITS (TYP). 2007 CBC 907.2.10.3
6. EXTERIOR WALL LIGHTS.

History record:

Date	Description

Revisions:

No.	Date	Description

Project name:
BROAD STREET VILLAGE BUILDING C
2238 BROAD STREET
SAN LUIS OBISPO, CA



Stamp:

Sheet title:
FIRST FLOOR POWER PLAN

Copyright 2013. All rights reserved. No part of this work product shall be reproduced in any form or by any means-graphic, electronic or mechanical, including photocopying, without permission in writing from RENGEL+CO.

Date:	06.19.14
Drawn by:	R.C.A.
Project #:	201419
File name:	H:\Projects\Broad Street Village\CD's

Sheet:
A300